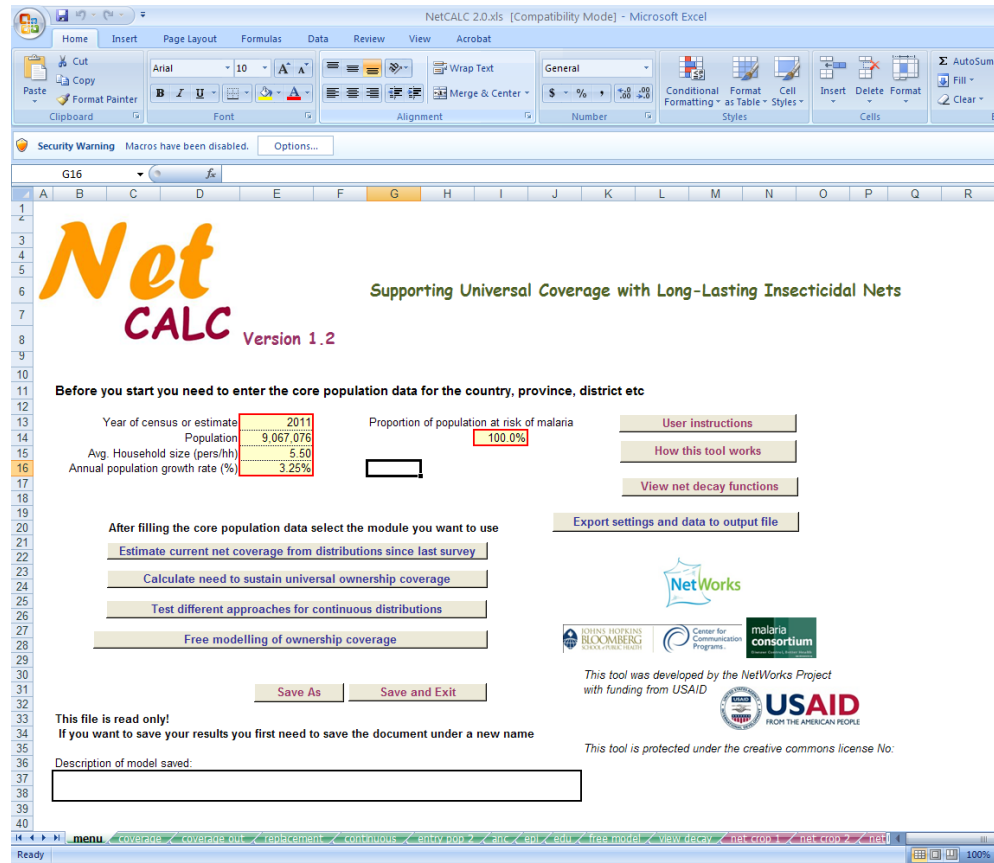


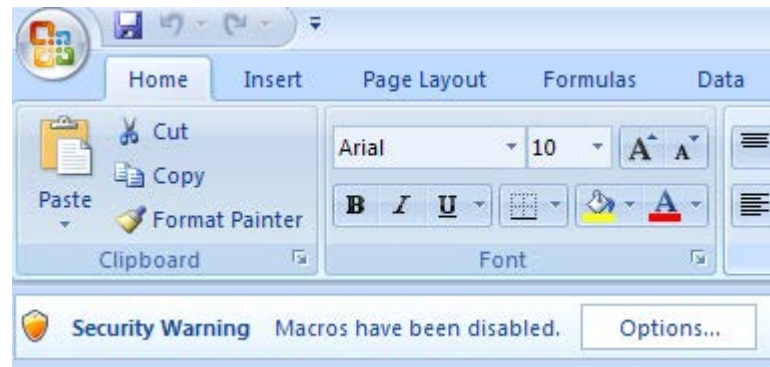
# How to Enable Macros for a PC

(See below for a Mac)

**Figure 1:** When initially opening NetCALC, this is the main Menu page that will appear. In order for NetCALC to properly calculate your output, you will need to enable macros.



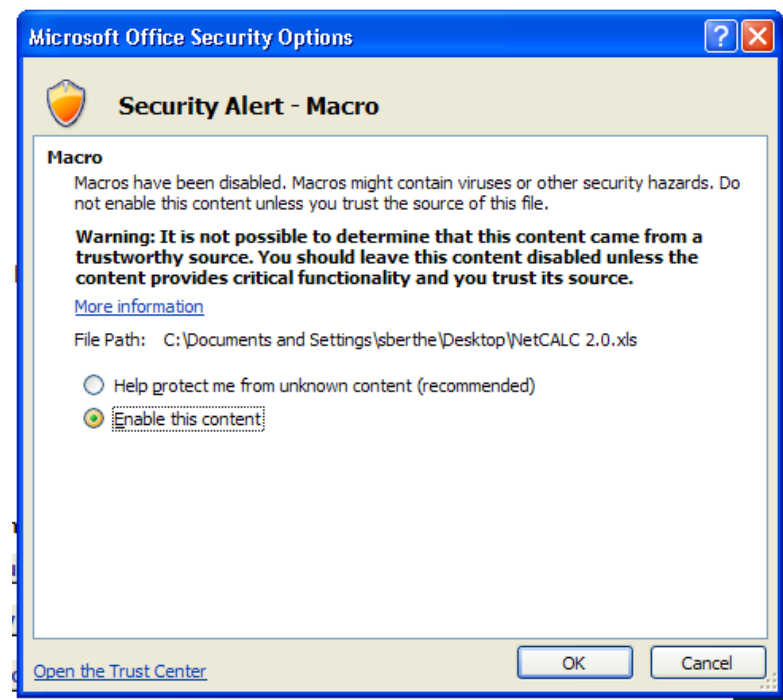
**Figure 2:** Just below the ribbon on Microsoft Excel, you will see a yellow shield and the words, “Security Warning: Macros have been disabled.” This is typically the default for Microsoft so it’s imperative that you manually enable macros to move forward. Click on the “Options...” button to the right.



**Figure 3:** A new window, “Security Alert – Macro” will open after you click on “Options...” and will explain the differences between enabling and disabling macros.



**Figure 4:** Select the “Enable this content” box and click OK.



**Figure 5:** After clicking OK, NetCALC will expand on your screen and the Microsoft ribbon will disappear. At this point, you are ready to start entering data into NetCALC! If you need to access the ribbon, just

click on the “restore down” button on the top right corner (the middle button between minimize and close).

NetCALC 2.0.xls [Compatibility Mode] - Microsoft Excel

	A	B	C	D	E	F	G	H	I	J	K	L	M	N	O	P	Q	R
1																		
2																		
3																		
4																		
5																		
6																		
7																		
8																		
9																		
10																		
11																		
12																		
13																		
14																		
15																		
16																		
17																		
18																		
19																		
20																		
21																		
22																		
23																		
24																		
25																		
26																		
27																		
28																		
29																		
30																		
31																		
32																		
33																		
34																		
35																		
36																		
37																		
38																		
39																		
40																		
41																		

Net

CALC

Version 1.2

Supporting Universal Coverage with Long-Lasting Insecticidal Nets

**Before you start you need to enter the core population data for the country, province, district etc**

Year of census or estimate	2011	Proportion of population at risk of malaria	100.0%	<a href="#">User instructions</a>
Population	9,067,076			<a href="#">How this tool works</a>
Avg. Household size (pers/hh)	5.50			<a href="#">View net decay functions</a>
Annual population growth rate (%)	3.25%			<a href="#">Export settings and data to output file</a>

After filling the core population data select the module you want to use

[Estimate current net coverage from distributions since last survey](#)

[Calculate need to sustain universal ownership coverage](#)

[Test different approaches for continuous distributions](#)

[Free modelling of ownership coverage](#)

[Save As](#)   [Save and Exit](#)

**This file is read only!**  
 If you want to save your results you first need to save the document under a new name

Description of model saved:

This tool was developed by the NetWorks Project with funding from USAID

This tool is protected under the creative commons license No:

## How to Enable Macros for a Mac

**Figure 1:** Upon opening NetCALC 2.0, Microsoft Excel will prompt you with the screen below. Simply click on “Enable Macros” and you will be ready to start using NetCALC.

